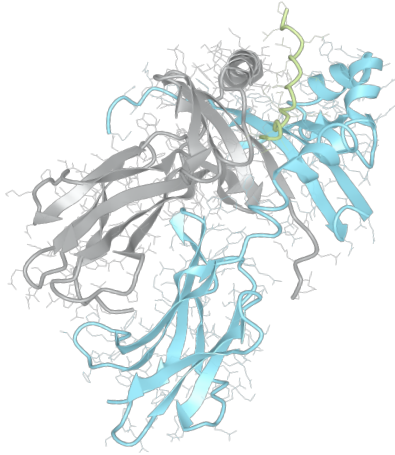


# Product datasheet



## sHLA– DQB1\*06:03 DQA1\*01:03

DQB1\*0603, DQB10603, DQB1\*06, DQB06, DQ6  
DQA1\*0103, DQA10103, DQA1\*01, DQA01

<b>Serological Name</b>	DQ6
<b>Peptide Load</b>	Endogenous
<b>Modification</b>	Unmodified
<b>Conjugation</b>	Unconjugated
<b>SKU</b>	DQB10603/DQA10103

### Product Description

<b>Allele Name</b>	DQA1*01:03 DQB1*06:03
<b>HLA Class</b>	HLA Class II
<b>HLA Gene Locus</b>	HLA-DQ
<b>Alternative Allele Name A Chain</b>	DQA1*0103, DQA10103, DQA1*01, DQA01
<b>Alternative Allele Name B Chain</b>	DQB1*0603, DQB10603, DQB1*06, DQB06, DQ6
<b>Description</b>	Recombinant, truncated Class II soluble Human Leukocyte Antigen (sHLA), naturally folded and glycosylated, loaded with endogenous peptides.
<b>Serological Name</b>	DQ6
<b>Serological Split</b>	DQ1
<b>Allele Frequency [World Population]</b>	
<b>A chain</b>	8.2%
<b>B chain</b>	3.9%

### Associated products

[DQB10603/DQA10103bio](#)  
[DQB10603/DQA10103pe](#)

## Product Specification

<b>Product name</b>	HLA-DQB1*06:03/DQA1*01:03
<b>HLA Species</b>	Human
<b>Host Cell Line Species</b>	Mouse
<b>Clone Designation</b>	
<b>Tail Specification</b>	ZP
<b>Peptide Load</b>	Endogenous
<b>Modification</b>	Unmodified
<b>Conjugation</b>	Unconjugated
<b>Complexity</b>	Monomer
<b>Protein Format</b>	Recombinant, truncated, zipper-stabilized, soluble, non-modified, non-labeled, endogenously loaded
<b>Storage Temperature</b>	4°C (This product should be stored undiluted)
<b>Form</b>	Liquid
<b>Concentration</b>	1000.0 µg/ml
<b>Formulation</b>	PBS/0.02% Sodium Azide
<b>pH</b>	7.4
<b>Purification Method</b>	Affinity Chromatography
<b>Grade</b>	Research Use Only [RUO]
<b>Authentication Verification</b>	Sequence Based Typing

## Protein Sequences

<b>Alpha Chain Sequence</b>	EDIVADHVAS CGVNLQFYG PSGQFTHEFD GDEQFYVDLE KKETAWRWPE FSKFGGFDPQ GALRNMAVAK HNLNIMIKRY NSTAATNEVP EVTVFSKSPV TLGQPNTLIC LVDNIFPPVV NITWLSNGHA VTEGVSETSF LSKSDHSFFK ISYLTFLPSA DEIYDCKVEH WGLDQPLLKH WEPEIPAPMS EVDGGGGGAQ LEKELQALEK ENAQLEWELQ ALEKELAQ
<b>Beta Chain Sequence</b>	RDSPEDFYVQ FKGMCYFTNG TERVRLVTRH IYNREEYARF DSDVGVYRAV TPQGRPDAEY WNSQKEVLEG TRAEALDTVCR HNYEVAFRGI LQRRVEPTVT ISPSRTEALN HHNLLVCSVT DFYYPGQIKVR WFRNDQEETA GVVSTPLIRN GDWTFQILVM LEMTPQRGDV YTCHVEHPSL QSPTTVEWRA QSESAQSKVD GGGGAQLKK KLQALKKKNA QLKWKLQALK KKLAQ

## Related Products

[DQB10602/DQA10103](#)  
[DQB10601/DQA10103](#)  
[DQB10301/DQA10201](#)  
[DQB10602/DQA10102](#)

## Applications

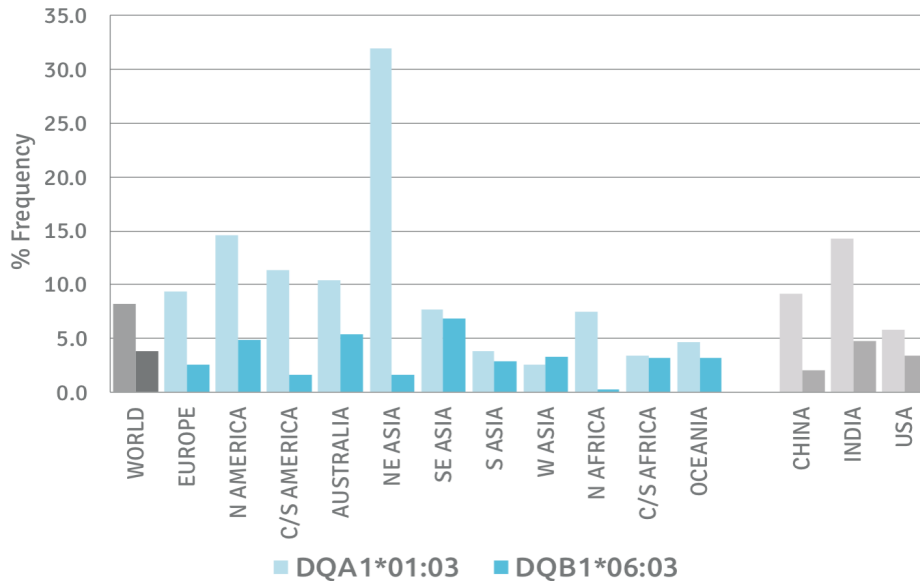
HLA Sandwich ELISAs  
 HLA Direct ELISAs  
 HLA-Sera Antibody Assays  
 HLA Controls in ELISA Assays  
 HLA Assay Standards  
 HLA Blocking Assays  
 HLA Neutralizing Assays  
 HLA Competition Assays  
 HLA Bead Assays  
 HLA Immunization Procedures

## Recommended Antibodies

-

## Allele Frequency

### Worldwide Allele Frequency



Please note:

ALL PRODUCTS ARE FOR RESEARCH USE ONLY. NOT FOR COMMERCIAL USE IN DIAGNOSTIC PROCEDURES.  
 For more information, please visit our Policies section on our website. For licensing inquiries, please contact

[licensing@hlaprotein.com](mailto:licensing@hlaprotein.com)

HLA Protein  
 PURE PROTEIN LLC

**Eplet Assignments**

**DQB1\*06:03**

Eplet	Polymorphic Residues	Antibody Reactivity
3S	3S	
9Y	9Y	
13GM	13G14M	
23R	23R	
26L	26L	
30H	30H	
37YA	37Y38A	
45G	45G	
45GV	45G46V	Yes
46VY	46V 52P 28T	Yes
52PQ	53Q 89G 90I	Yes
55R	55R	Yes
55RPD	55R56P57D	
56P	56P	
56PD	56P57D	
66EV	66E67V	
67VG	66E67V70G	
67VT	67V71T	
70GT	67V70G71T	
74EL	74E75L77T	
77T	77T	Yes
86A	86A	
87F	87F	Yes
125G	125G	
130R	130R	
135D	135D	
167R	167R	
182S	182S	Yes
185T	185T	

**Eplet Assignments**

**DQA1\*01:03**

Eplet	Polymorphic Residues	Antibody Reactivity
2D	2D 199A	Yes
25FT	25F26T	
40E	40E	Yes
52SK	52S 53K 11C 18F 45A 64R 66M 69A 80Y	Yes
75I	75I 161D 163I	
129H	129H	
130A	130A	
160A	160A	
160AD	160A161D	